



Concare Engineers

Delivers Beyond Expectations

Vision: Construction supportive specialty consultancy with a view to bring environmentally friendly sustainable green and clean solutions to India – Industrial, Commercial Institutions and Industry with special focus on ecofriendly non VOC material selection utilization.

Mission: To interfere activities of construction with specialty techniques for environmental ecofriendly green solutions that will benefit our clients and the planet, artisans and train user-friendly product selection application system economically.

COMPANY PROFILE

We, Concare Engineers, established with vision with economic friendly green building concept, concentrating in residential, industrial and commercial building sector. Established in innovative Kitchen Consultancy Turnkey Projects, Professional Innovative Industrial Cleanroom Flooring Solutions, Concrete Polishing and Stamp Concreting. With green building concept, ecofriendly, non VOC like solvent additives based system.

Mr. A. P. Jaikumar
9483508600
Managing Director

Our Services

- Cleanroom turnkey Projects.
- Kitchen turnkey Projects.
- Facility turnkey Projects.
- GFRG Works.
- False Ceiling System, Sun Loovers.
- UPVC doors, windows and modular furniture with kitchen cabinet.
- Coloured stamp concrete and Engineered / monolithic Concrete polishing.
- Waterproofing solutions, Patented expansion joint solutions, EPDM Roofing.
- Self-leveling, screed, epoxy flooring.
- Glazing, Interior design, ACP.

287, 1st Cross, 1st Main, 1st Block, Jakkasandra ext.,
Koramangala, Bangalore – 34.
Telephone : 080 22581010

Mobile : 9483508600/9483508662

Email: concareengineers@hotmail.com

Website: www.concareengineers.com

With the strength and expertise of our team, Concare Engineers has conquered its business success by providing innovative construction solutions to complex infrastructure service projects across India for over 15 years.

Kitchen Project

Our services are based on sound culinary principles and how a Chefs works not just rules of thumb.

Property visit with technical expert

Submitting CAD drawing with Equipment layout

Key Areas

Civil work

Electrical

Plumbing, (Hot and Cold, RO Plant, Drainage lines, imported/Customized SS Cratings, Grease Trap etc.

Fresh Air and Exhaust System, HVAC

SS Hoods

SS ceiling

LED lighting

Fire Suppression System, BMS

Integration of Fire alarm system with Kitchen Heat detectors

LOT/LPG system, LPG leakage detection system

Fire rated steel doors

Sign Boards

Live Kitchen Design, Operation and maintenance support

Kitchen Equipment, erection, periodical inspection and commissioning, submission of layouts, training, safety systems etc.

Supply of construction chemicals to projects

Major Projects Handled on:

- Kitchen Turnkey Projects
- GFRG works
- RO Water supply system, WTP-STP handling system.
- Solar power and water heating system.
- Fibre Reinforced Protection and acid resistant protective system for industrial protection.
- Coloured polishing flooring system added integral colours with usual concrete or with engineered screed for driveway, pool deck, landscapes and walkway, ramps etc.
- Concrete polishing.
- Clean room epoxy/polyurethane/solid wood/laminate/vinyl/sports flooring.
- Self-leveling quick curing underlay, screed flooring.
- Glazing, Interior design-modular furniture and landscaping.
- Time tested Pre-Post Construction Waterproofing solutions.
- Water repellent coatings, epoxy coatings, polyurethane coatings etc.
- Structural strengthening/repairs.



Polished Concrete

The Benefits of Polished Concrete

Beautiful – Polished concrete creates a look competitive with natural stone flooring.

Lasting solution – There is nothing to chip, peel or wear off as epoxy and sealers.

Coating free – The floor is ready for immediate use because there are no coatings to cure.

Minimal maintenance – Just sweep and mop...strippers and waxes are never used.

Green – A significant number of LEED points are available from polished concrete.

Increased Durability – Our densifier/sealer will harden and dust-proof the concrete.

Tough – Foot traffic, forklift tires, vehicles, pallets, etc. do not damage polished concrete.

Safe – Wet or dry, it meets or exceeds all OSHA slip resistance standards.

Slip Resistance Testing for HTC Superfloors.

According to the ADA, OSHA and ASTM guidelines, ground and floor surfaces shall be considered slip resistant if the measured static coefficient of friction is a minimum 0.5 when tested in accordance with either ASTM C-1028 (field or laboratory test) or ASTM D-2047 (laboratory test) methods.

Results:

Dry Floor

- High gloss polished floor finished with a 3000-grit resin diamond.
- 0.70 average of multiple readings.
- Exceeds OSHA standards by 40%.

Wet Floor

- High gloss polished floor finished with a 3000-grit resin diamond.
- .61 average of multiple readings.
- Exceeds OSHA standards by 22%.

Notes:

Tested with a Sellmier FSC2000 Slip Test machine with a leather attachment. The Sellmier machine tests both static and dynamic coefficient of friction. It provides a digital printout and audit trail for verification of the results. Testing completed at HTC's facility in Knoxville, TN.

Polished Concrete Floor



Polished Monolithic Concrete Floor

Grey coloured polished concrete



Grey polished concrete with stenciled random fallen maple leaves



Night light reflection on polished concrete



Grey polished pedestal



Polished boundary wall reflection



Textured Polished Lobby/Restaurant Concrete Floor



Stamped Concrete

Stamped Concrete is one of those home remodeling trends that seems to be catching fire lately, and for good reason. We are doing stamped concrete for years only expensive commercial applications looked decent, and even that was a stretch. Recently, though new texturizing and pigmenting trends allow home owners to introduce stamped concrete to exteriors.

The Benefits of Stamped Concrete

- One solid piece of non-water absorbent treated concrete slab which stops weeds growing.
- Relatively easy to clean and maintain.
- It can be designed to blend with any décor or settings.
- Resembles the look and feel of natural products like rock, tile, brick, natural stone, etc.
- Gives good look to the pool decks, floors, driveways, pavements etc.

Stamped Concrete Floor

Swimming Pool



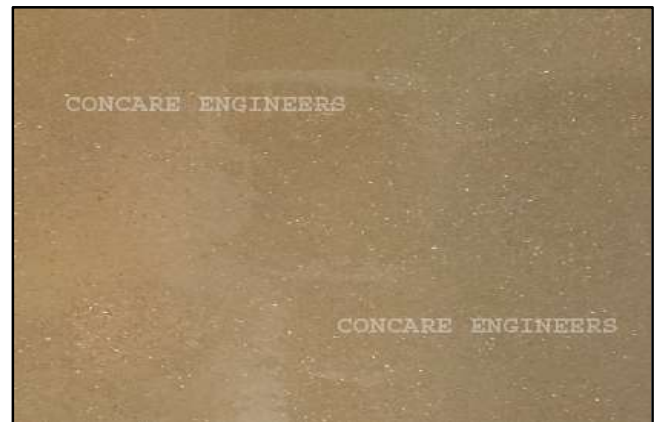
Pavement



Driveway



Sandscape



Wall and Ceiling Expansion Joint systems



EPDM Roofing



Scan Room Anti-static Flooring on Selflevel Underlay



Vinyl Flooring on Self Levelled Underlay

Hetrogeneous Vinyl



Homogeneous Vinyl



Different Types of EPU Flooring

Epoxy Flooring at Porsche Showroom



Synthetic Flooring at Basketball Court



Different Types of Rubber Flooring

Interior Play Area

Exterior Play Area



Anti-static Epoxy Flooring

Schneider Lab



Mindtree Lab

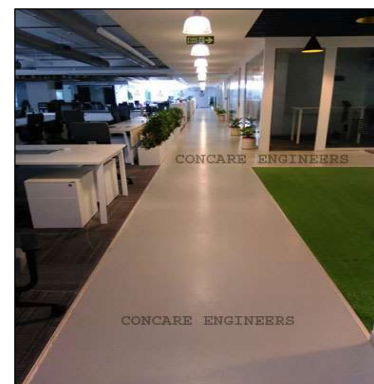


Industrial Epoxy Flooring

Deep Blue - Play Area



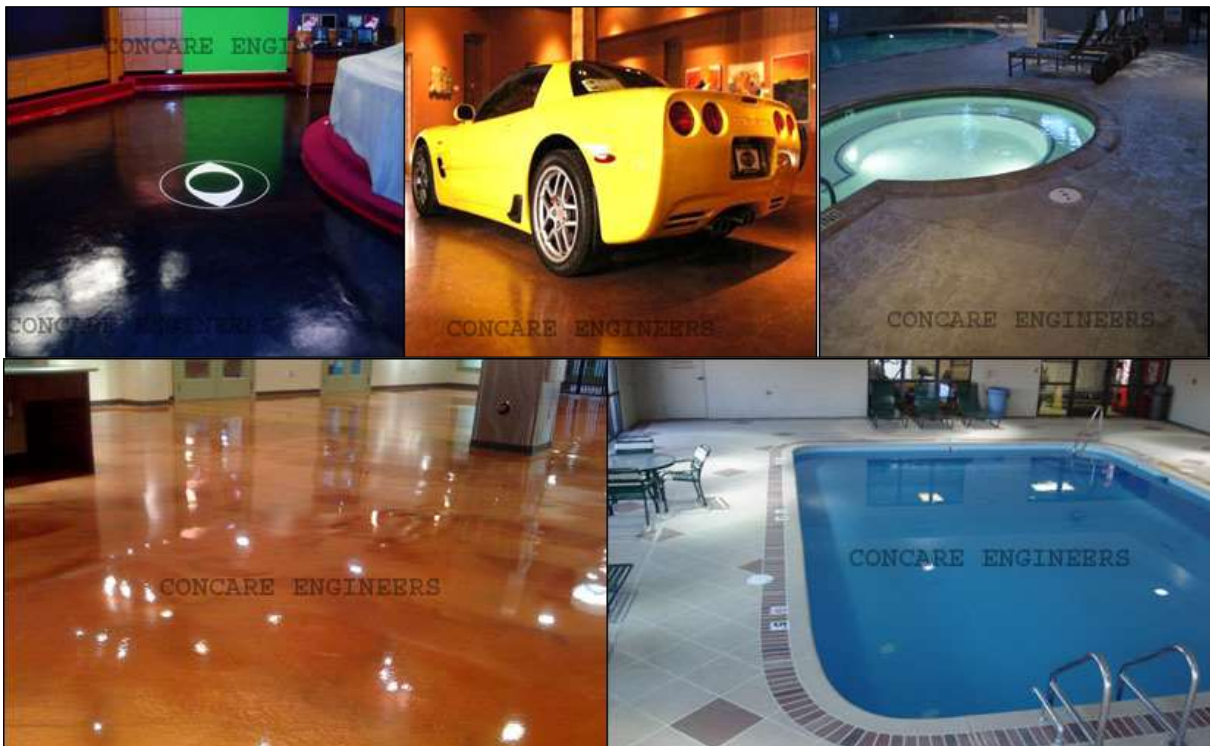
Aqua Green – Corridor



Different Kinds of Concrete Flooring



Aqua Reflex Polyurethane Hybrid Flooring



PU Grouting on Concrete Slab



UPVC Profile and Glazing

French Doors and Windows



Commercial Showroom



Residential



Projects and Clients

Alliance Business School, for Teekays
Alltech Interiors, Thiruvannamipur, Chennai
ALP Kitchen (Tilt pub)- Bangalore
AN Prakash Bangalore
Anarghya Constructions, Bangalore
AOL, Northern Operating Services, for SDPL, Bangalore
AT & S, Mysore, for Karnataka Agro Chemicals
AVM Interior Decorators- Bangalore
Avon Tools, Bangalore
Balmer & Lawrie Co. Ltd, Bangalore
Bangalore Biotech Labs. Bangalore
Bangalore Internl. Exbn. Center (IMTMA)
Brady Corp., Cyber Park, Electronic City
Brigade Group, Bangalore
Builders & Interior Decorators, Rajaji Nagar, Bangalore
Cerner Health Care, for M/s Raj Interiors
CGI, Hyderabad & Bangalore, for Flutech
Charishma Hotels Pvt. Ltd (Park view)
CISCO-VTV, for SDPL, Bangalore
Citrus Hotels and Resorts
CM Enviro Systems Pvt. Ltd, Bangalore
Construction Enterprises, Shivaji Nagar, Bangalore
Dish Hospitality Pvt. Ltd- Bangalore
Fenesta
Flutech Interiors (I) Pvt. Ltd, Kodihalli, Bangalore
FRDC Architect, Bangalore
Friendly Automotives (India) Pvt. Ltd-BLR
GAG Associates, Bangalore
Gawakshi Traders, Mangalore
GE, Whitefield, for Eleganz Interiors
GMR, Bangalore
Godrej Tyson, Bangalore
Goldman Sachs Sun River Building / Crystal Down Building, for ACME
Government Hospital, for Gouri Enterprises, Belgaum
Gunasheela Hospital, Basavangudi
Hare Krishna Metallica, Koppal
Hewlett Packard Global Soft, Bangalore
Hindustan Infrastructure Projects and Engineering (HIPE)
HIPE Developers, Bangalore
Hitesh Construction Company
HM Towers
Holiday Inn, Cochin
Honeywell, for Sharadi Associates
Hotel GemPark, Ooty, Tamil Nadu
India Builder Corporation, for Buildline Engineers

Indus Homes, Bangalore
Integrated Services & Projects- Bangalore
Interiors Total Solutions in Interiors- BLR
ISRO Valiyamala Contractor Jatan Construction Epoxy and Antistatic Flooring
ITC Ltd., Banasawadi, for Flutech Interiors
ITPL, Papricas, for AVM Interiors, Bangalore
Juniper Networks, for Kayson, Bangalore
Jupiter Infrastructure, Bangalore
Karnataka Agro Chemicals Pvt. Ltd, Bangalore
Kawasaki, UB city
Kemwell, for Teekays
KIMS, Kerala
Kirloskar Autoparts, for Pelican, Bidadi
Kirloskar Toyota Textile Machinery Pvt. Ltd, Bangalore
Klearon, Bangalore
KPIT, Bangalore, for Vector Projects, Mumbai
Krayons Inspiring Interiors, Bangalore
Krayons Interior Systems Pvt. Ltd, Bangalore
L&T Bangalore
Lalbagh Hospital
Leela Lace, for SDP Kochi
LPG Equipment, Bangalore
Lulu Mall, Kochi
Madhur Pharma & Research Laboratories (P) Ltd., Bangalore
Mallige Medical Centre Pvt. Ltd-Bangalore
Manipal Hospitals, Bangalore
MARG Group, Chennai, for Total Floors
MARG-PayPal Campus, for Total Floors
MID Interiors Pvt. Ltd.
Mirror Museum, Bangalore
Nag Interiors Pvt. Ltd, Frazer Town, Bangalore
Naveen Architects
NCBS (GKVK), Hebbal, Bangalore
NCCL Medical College, Pathanamthitta
Nexteer Automotive Pvt. Ltd., Jigani, Bangalore
NGV, Nethravathy Block, Bangalore
Ocwen Software, Bangalore
OM Sai Intex Pvt. Ltd, Bangalore
One Source, Bangalore
Oxford College of Engineering
Pacafic Interiors
Paithrika Homes and Estates (P) Ltd, Trivandrum
Powerica Ltd, Bangalore
Pratham Infrastructures, Bangalore
Prestige Golf Shire, Devanahalli, Bangalore
Punit Creations, Bommasandra, Bangalore

Puthur City Hospital, Mangalore
R D & M Architects, Bangalore
Raj Interior Work, Bangalore
RMZ, Bangalore
Royal Interiors, Bangalore
Sakara Healthcare & Research Services Pvt. Ltd, Bangalore
Schneider Electricals, for CGI- Teekays Interiors
Seemac Exterior & Interior Product, Bangalore
Shell, Bangalore, for Omsai Interiors
Shree Radha Krishna Alloys (P) Ltd., Bangalore
SIT, Tumkur, Bangalore
SMG Interdecor (P) Ltd., Bangalore
Soundarya Decorative, Bangalore
Sri Ananthapur Trust, Bangalore
Sri Hari TVS, Bangalore
Sri Nimishamba Interiors, Bangalore
Sri Sachidantha Ashram, Mysore
Sridevi Interiors, Nellore
Srushti Pharmaceuticals Bangalore
Sterling Mac Hotels (Mattan), Bangalore
Strides Shausun Ltd, Surjakkanahalli, Bangalore
Suchura Technologies, Bangalore
Suma springs, Bommasandra, Bangalore
Tasty Tangle Restaurants
Tata Motors, Bangalore
Techno Designs, Peenya, Bangalore
TESCO, Whitefield, for Teekays Interiors
TimeZone Entertainment Pvt. Ltd., Bangalore
TSC Enterprises, Mysore road, Bangalore
UB City, Concord, for Regus
Wipro, Bangalore
Wood Craft

For more details, please contact:

287, 1st Cross, 1st Main, 1st Block,
Jakkasandra ext., Koramangala,
Bangalore – 560 034.

Telefax: 080 22581010

Email: concareengineers@hotmail.com, concareengineers@gmail.com

Website: www.concareengineers.com